



# Matings per Service Report



Innovative. Precise. Secure.

- A clear picture of production performance based on the number of matings per service and also the numbers of services
- Has graphs for good visuals
- Can be run for select Parities or all Parities
- Run by Production week for designated number of weeks

What is the difference between a Mating and a Service?

A Mating is when an animal receives one dose of semen (or boar interaction). So a single mating would be one dose, 2 matings – 2 doses, and so on.

A service is the estrus cycle for an animal in which she has a single mating or multiple matings.

A service to service timeframe must be at least 7 days between each other.

Use this report to analyze the performance results based on the number of matings (doses of semen)

For example: How do animals with just 1 service compare to those with 2 or 3?

<b>Mating:</b>	<b>1 Mating</b>	<b>2 Mating</b>	<b>3 Mating</b>	<b>4+ Mating</b>	<b>Total</b>
Total Services	2,947	4,127	42	3	7,119
% Total Services	41.40%	57.97%	0.59%	0.04%	100.00%
Repeats	0	0	0	0	0
% Repeat Services	0.00%	0.00%	0.00%	0.00%	0.00%
Dropouts < 35 Days	492	590	4	0	1,086
Conception Rate	83.31%	85.70%	90.48%	100.00%	84.75%
Farrowed	2,074	3,147	34	3	5,258
Farrowing Rate	70.38%	76.25%	80.95%	100.00%	73.86%
Total Born	26,760	39,620	445	29	66,854
Avg Total Born	12.9	12.6	13.1	9.7	12.7
Born Alive	24,941	36,589	424	27	61,981
Avg Born Alive	12.0	11.6	12.5	9.0	11.8
Stillborn	935	1,398	14	2	2,349
Stillborn %	3.49%	3.53%	3.15%	6.90%	3.51%
Mummified	884	1,633	7	0	2,524
Mummified %	3.30%	4.12%	1.57%	0.00%	3.78%
Piglet Deaths	3,098	7,158	41	4	10,301
Pre-wean mortality %	12.42%	19.56%	9.67%	14.81%	16.62%

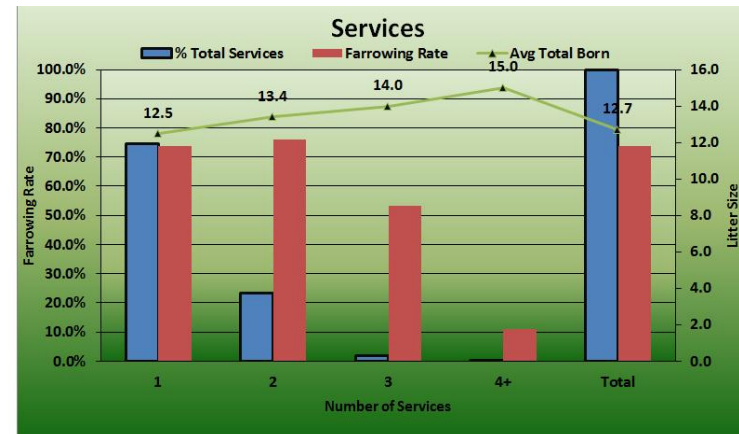
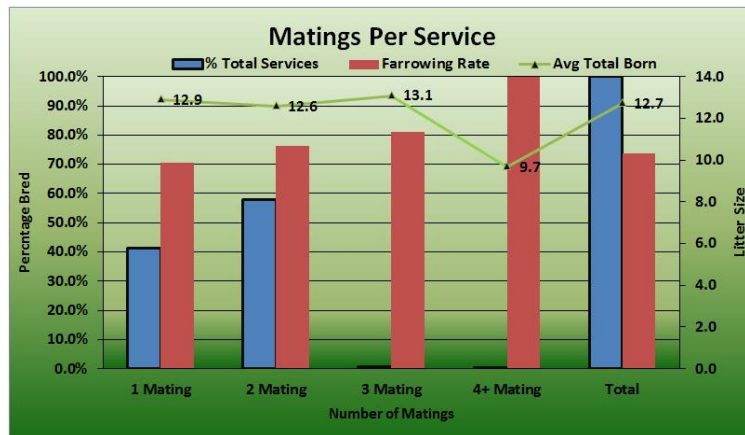
See Performance results based on the number of services the sow required to farrow.

Use this to see how returns performing. Should I cull the 2<sup>nd</sup> time they return to service?

Services:	1	2	3	4+	Total
Total Services	5,298	1,662	141	18	7,119
% Total Services	74.42%	23.35%	1.98%	0.25%	100.00%
Matings per Service	1.6	1.6	1.4	1.5	1.6
Repeats	0	0	0	0	0
% Repeat Services	0.00%	0.00%	0.00%	0.00%	0.00%
Dropouts < 35 Days	745	286	44	11	1,086
Conception Rate	85.94%	82.79%	68.79%	38.89%	84.75%
Farrowed	3,916	1,265	75	2	5,258
Farrowing Rate	73.91%	76.11%	53.19%	11.11%	73.86%
Total Born	48,827	16,949	1,048	30	66,854
Avg Total Born	12.5	13.4	14.0	15.0	12.7
Born Alive	45,007	15,962	982	30	61,981
Avg Born Alive	11.5	12.6	13.1	15.0	11.8
Stillborn	1,727	585	37	0	2,349
Stillborn %	3.54%	3.45%	3.53%	0.00%	3.51%
Mummified	2,093	402	29	0	2,524
Mummified %	4.29%	2.37%	2.77%	0.00%	3.78%
Piglet Deaths	6,957	3,130	210	4	10,301
Pre-wean mortality %	15.46%	19.61%	21.38%	13.33%	16.62%

The graphs give a quick visual on the % Total Services, Farrowing Rate, and Avg Total Born of both the Matings Per Service and the number of Services.

Seeing these numbers can help you make decisions that can greatly impact your bottom line.



---

Contact us :

Email:

[support@metafarms.com](mailto:support@metafarms.com)

Phone: 952-215-3233

Website: [www.metafarms.com](http://www.metafarms.com)